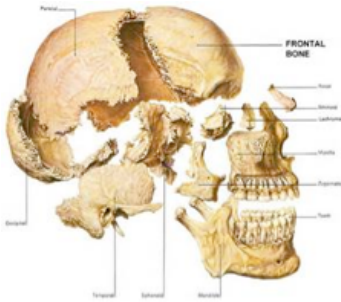


THE ANATOMY OF THE CRANIAL BONES

Review this PDF paying special attention to the bolded references. Refer to the Anatomy Coloring Book pages listed below and color in the bolded bones. If you have an older or revised edition the page numbers may be different.



We began our exploration at the **cranial bones** (all pg. 22 & 23). Bend your head forward, dropping your chin to your chest. Bring your fingers to the cave-like opening at the back of the skull, the **occipital bone**. Trace your fingers to either side of the cave-like opening these are the **occipital condyle**.

Move your fingers up toward the top of the head, stopping at the back of the skull. This is the **parietal bone**. Move your fingers forward toward the forehead and we find the **frontal bone**.

Take your fingers above the ear and trace down the back of the ear and we find the part of the skull called the **temporal bone**. Come forward from the ear and rub at the place we massage when we have a headache and you find the **sphenoid bone**.

Trace around your eye sockets. Bring your fingers to either side of your nose. Rub deep in toward the eye and you will feel the **ethmoid bone**.